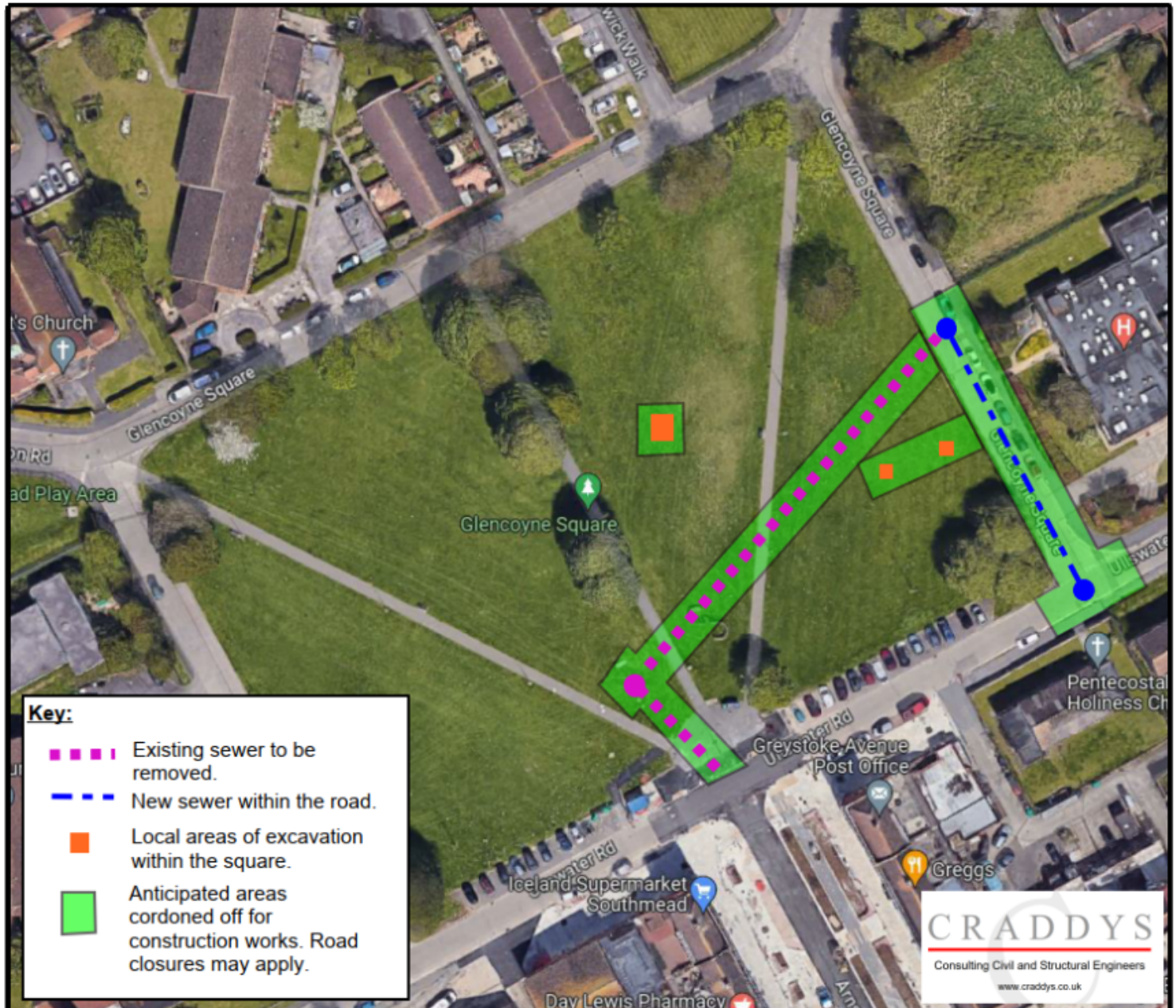


# The Sewer On The Square



Did you know there was a sewer under Glencoyne Square? The pink dotted line on the map shows where the sewer is now. As you can see it crosses the square. So before any construction on the homes can take place, this sewer needs to be moved. Its new location will be along the road by the doctors surgery, shown by the blue line on the map.

The work is expected to take place in autumn 2023. There will be some disruption during this time - the maps shows the approximate areas of disruption. The orange areas show the spots where some excavation will have to happen. And the green areas will be cordoned off so sections of the park will not be accessible. It is also likely that roads will have to close for a short time to complete the work. We will keep everyone up to date with when this is via The Mead newsletter, our social media, and the noticeboards and we are grateful for your understanding.



[info@southmead.org](mailto:info@southmead.org)



[greenwaycentre](#)



[TheMeadBS10](#)